

# KING'S FAITH

START THE DISCUSSION

Get more information about the movie at [KingsFaith.com](http://KingsFaith.com)

## KING'S FAITH - START THE DISCUSSION

THIS SHEET IS INTENDED FOR YOU TO TAKE THE FIRST STEP OR DISCUSSION WITH YOUR GROUP AFTER YOU WATCH KING'S FAITH. This is **NOT** a Bible Study, but rather an informal launching point to see how your students reacted to the movie and which characters they most resonated with. In our experience, students will latch on to certain characters that go through similar experiences or feelings that they themselves have gone through. This discussion could be a great way to get insight into what is going on in the lives of your students.

We also see this as the very first step in the use of the **King's Faith Bible Study Curriculum**. The study is much more in depth and may be intimidating to a first time student who is still seeking. Use this opportunity to promote your follow up Bible Study and let the students know it will be much more in depth and scripture based.

Remember, this is a great way to start a discussion about the movie and the themes that come out of it. Use this as a way to get to know the students that you don't know quite as well. Be sure to follow up personally to the discussions you have and let them know that you are available and praying for them!

### CREATE THE SETTING

You want to sit down with your group to go over this while the movie is as fresh in their minds as possible. We recommend even sitting down at a local coffee shop after you watch the movie in theaters. We are hoping and praying that your students brought their unchurched friends to the movie. Considering that, a “*common ground*” area may be more effective than going back to your church to meet up. A casual, comfortable setting will go a long way in having an open and honest discussion about the movie.






### START HERE

Let everyone know that they are in a judgment free zone. Encourage them to be as open and honest as they can be. We can all learn from one another's experiences.



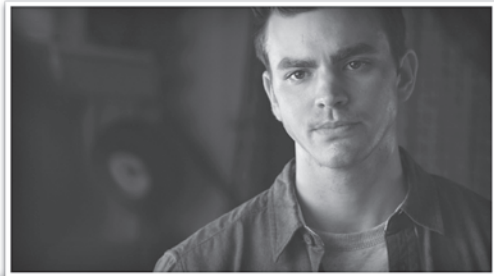
### OPENING UP

Start with some simple questions to get the discussion rolling and to get some common ground among your group.

-  1. **WHAT** was your favorite part of the movie?
-  2. **AS** you were watching, what were some of the themes that you noticed in the movie? (*ex. forgiveness, regret...*)
-  3. **HAVE** you ever experienced a loss like Mike and Vanessa did, that just didn't make any sense?
-  4. **HOW** would you have handled the situation that Brendan found himself in with Eli at the end of the movie?
-  5. **WAS** there a certain character in the movie that you could relate to what they were going through? How so?

**T**HE CHARACTER THAT YOUR STUDENT MOST RELATES TO can tell you a lot about their personal experience. Maybe they think they can't be forgiven for their past. Maybe they blame God for something that has happened in their life. Whatever the case, this could be very delicate for some of your students. Be sure not to force them into a discussion that they aren't yet ready to have. Use the summary below to remind the students about each character if necessary.

## BRIEF SUMMARY OF THE MAIN CHARACTERS



### BRENDAN

**B**RENDAN HAS SEEN A LOT IN HIS 18 YEARS, most of it not good. Growing up in the foster care system, Brendan spent most of his life on the fringes of society. His former gang provided the only loyalty, stability, and sense of belonging that he had ever known, but eventually that world left him utterly alone once more, incarcerated, lost, and confused.

While imprisoned, Brendan found faith and with it a renewed hope and sense of purpose. But keeping his faith once he regains his freedom is more of a challenge than when he was locked down, as new opportunities, new friends, and a new future clash directly with old temptations, old friends, and a past that he can't seem to escape.



### NATALIE

**O**N THE SURFACE, NATALIE SEEMS TO HAVE IT ALL: looks, brains, talent, and popularity. But this facade belies an emptiness that is consuming her, and the energy it takes to maintain her front only sharpens her pain on a daily basis. Brendan's appearance in her life adds to her inner-turmoil – one part of her is drawn to him and another wants to avoid him at all costs.

Eventually she realizes that it's not Brendan that she's trying to avoid as much as the questions he stirs in her, questions concerning the path she's traveled and the path she must take if she is to move forward in her life.





## MIKE

**M**IKE IS A MAN OF FAITH, salt of the earth, who works in the school where Brendan enrolls. He and his wife Vanessa have lost their only son, Lewis, some years before to a mindless act of violence while Lewis was on duty as a police officer. Mike has convinced Vanessa to take Brendan in as a part of a second chance program for young men caught in the criminal justice system. Mike views it as a second chance for him and Vanessa, too – a second chance to renew their hope in humanity.



## VANESSA

**V**ANESSA HAS STRUGGLED MIGHTILY since the death of her son. She has steadily withdrawn from life – from her work, her friends, her faith. In what she sometimes views as a moment of temporary insanity, she has allowed Mike to talk her into taking in the young man with the troubled past. Now she wonders what she has gotten herself into, can't imagine why she thought she had something to give to someone else when she can barely sustain herself.



## RUSSELL

**R**USSELL IS A DETECTIVE who grew up with Mike and Vanessa's son Lewis. He carries the heavy burden of Survivor's Guilt regarding Lewis's death, feeling that Lewis became a cop because he had encouraged him to do so. Now, he has made it his mission to protect Mike and Vanessa from any more heartache. He keeps Brendan trained in his crosshairs because the ex-gang member seems the most likely candidate to give Mike and Vanessa possible trouble in their lives.



## ELI

**E**LI IS LIVING, BREATHING PROOF of what Brendan very well could be: a product of the streets who lives by a vicious code. His loyalty to his fellow gang members is fierce – but it is anything but unconditional. Eli measures everything and everybody by their usefulness to his own ends. His every word and gesture serves as a rebuke to Brendan's new life, in effect saying, *“No matter what you do or say, you're never going to be accepted by normal society. Give it up and be who you really are: one of us...”*



## 🔍 A LITTLE DEEPER

If you get the opportunity to continue the discussion, some general questions about the themes of the movie may help drive the discussion



- ❓ 1. HAVE you ever felt like there was something you did that God couldn't forgive?
- ❓ 2. HAVE you ever blamed God for something that has happened in your life?
- ❓ 3. HAS there been a moment in your life where you felt personally responsible for hurting someone else?
- ❓ 4. WE have all done things in our pasts that we are not proud of. Have you ever had an experience like Brendan where you are trying to do the right thing but it just seems like you can't shake it? How did you end up getting past it?



REMEMBER TO GO WHERE THE CONVERSATION TAKES YOU. Do not try to force your way through the questions for the sake of completing this sheet. Allow the discussion to be organic and to be led by the Holy Spirit.

---

## ✓ CLOSING

Remind the students *“no matter what your past, nobody is ever too far gone from the love of Christ!”*

End your time with a plug for your upcoming **King's Faith Bible Study** and encourage the student's looking for more info to contact you!

